



Guangzhou LCS Compliance Testing Laboratory Ltd.

Add: No. 44-1, Qianfeng North Road, Shiji Village, Shiji Town, Panyu District,

Guangzhou City, Guangdong, China

Tel: (86) 020-39166689 Fax: (86) 020-39166619 Internet: [Http://www.LCS-cert.com](http://www.LCS-cert.com)

Report No.: LCS180420002CR

TEST REPORT

Applicant : ShenZhen ZhangQing Electronic LTD
Address : Number 622 HuaYuan Commercial center XiXiang Road XiXiang Street
Bao'An District, ShenZhen

Report on the submitted samples said to be:


Sample Name : POE TESTER
Trade Mark : ZhangQing
Style/ Item No. : WS POE Tester/Detector, POE tester, POE Tester V7, POE Tester V8,
POE Tester+, Power over ethernet tester, DC power supply tester, load
tester, poe load tester, poe monitor, universal poe tester, WS POE
Tester/Detector, POE Texas tester/Detector, ZQ poe tester/detector,
WS POE Tester+, POE Texas Tester/Detector+
Manufacturer : ShenZhen ZhangQing Electronic LTD
Address : Number 622 HuaYuan Commercial center XiXiang Road XiXiang Street
Bao'An District, ShenZhen
Sample Receiving Date : April 19, 2018
Testing Period : April 19, 2018 ~ April 26, 2018
Results : Please refer to next page(s).
Conclusion : The results shown on the report comply with the limit in commission
Decision of 21 July 2011 amending Directive 2011/65/EU (RoHS).

Signed for and on behalf of LCS

Written By: Linda Ning
Linda Ning

Checked by: Hart Qiu
Hart Qiu

Approved by: Suez Su
Suez Su





Guangzhou LCS Compliance Testing Laboratory Ltd.

Add: No. 44-1, Qianfeng North Road, Shiji Village, Shiji Town, Panyu District,
Guangzhou City, Guangdong, China

Tel: (86) 020-39166689 Fax: (86) 020-39166619 Internet: [Http://www.LCS-cert.com](http://www.LCS-cert.com)

Report No.: *LCS180420002CR*

of liability, indemnification and jurisdictional issues defined therein. The results shown in this test report refer only to the sample(s) tested unless otherwise stated. This Test Report cannot be reproduced, except in full, without prior written permission of the Company.

1. LISTS

No.	Part Name	Report No.
1	Yellow plastic shell	LCS171212030AR
2	White plastic	LCS171212051AR
3	Black ink	LCS171212039AR
4	Black plastic button	LCS171212048AR
5	Transparent plastic film	LCS171212049AR
6	Black screen	LCS171212085AR
7	LED	LCS171212055AR
8	Silver sheet	LCS171212075AR
9	Silvery metal(plug)	LCS171212070AR
10	Silvery metal needle(plug)	LCS171212071AR
11	Black plastic(plug)	LCS171212058AR
12	Black plastic case(C1)	LCS171212037AR
13	Silvery metal case(C1)	LCS171212067AR
14	Black plastic(C1)	LCS171212039AR
15	Electriolsis paper(C1)	LCS171212038AR
16	Silvery metal needle(C1)	LCS171212068AR
17	Gray inductance	LCS171212023AR
18	IC	LCS171212123AR
19	Triode	LCS171212026AR
20	Diode	LCS171212025AR
21	Chips of resistance	LCS171212028AR
22	Chips of capacitance	LCS171212027AR
23	PCB	LCS171212050AR
24	Solder on PCB	LCS171212063AR



Guangzhou LCS Compliance Testing Laboratory Ltd.

Add: No. 44-1, Qianfeng North Road, Shiji Village, Shiji Town, Panyu District,
Guangzhou City, Guangdong, China

Tel: (86) 020-39166689 Fax: (86) 020-39166619 Internet: [Http://www.LCS-cert.com](http://www.LCS-cert.com)

Report No.: LCS180420002CR

2. TEST DATA SUMMARY

Test items	Lead (Pb)	Cadmium (Cd)	Mercury (Hg)	Hexavalent Chromium Cr(VI)	PBBs	PBDEs
Unit	ppm	ppm	ppm	ppm	ppm	ppm
1	N.D.	N.D.	N.D.	N.D.	N.D.	N.D.
2	N.D.	N.D.	N.D.	N.D.	N.D.	N.D.
3	N.D.	N.D.	N.D.	N.D.	N.D.	N.D.
4	N.D.	N.D.	N.D.	N.D.	N.D.	N.D.
5	N.D.	N.D.	N.D.	N.D.	N.D.	N.D.
6	N.D.	N.D.	N.D.	N.D.	N.D.	N.D.
7	N.D.	N.D.	N.D.	N.D.	N.D.	N.D.
8	N.D.	N.D.	N.D.	N.D.	N.D.	N.D.
9	N.D.	N.D.	N.D.	N.D.	N.D.	N.D.
10	N.D.	N.D.	N.D.	N.D.	N.D.	N.D.
11	N.D.	N.D.	N.D.	N.D.	N.D.	N.D.
12	N.D.	N.D.	N.D.	N.D.	N.D.	N.D.
13	N.D.	N.D.	N.D.	N.D.	N.D.	N.D.
14	N.D.	N.D.	N.D.	N.D.	N.D.	N.D.
15	N.D.	N.D.	N.D.	N.D.	N.D.	N.D.
16	N.D.	N.D.	N.D.	N.D.	N.D.	N.D.
17	N.D.	N.D.	N.D.	N.D.	N.D.	N.D.
18	N.D.	N.D.	N.D.	N.D.	N.D.	N.D.
19	N.D.	N.D.	N.D.	N.D.	N.D.	N.D.
20	N.D.	N.D.	N.D.	N.D.	N.D.	N.D.
21	N.D.	N.D.	N.D.	N.D.	N.D.	N.D.
22	N.D.	N.D.	N.D.	N.D.	N.D.	N.D.
23	N.D.	N.D.	N.D.	N.D.	N.D.	N.D.
24	N.D.	N.D.	N.D.	N.D.	N.D.	N.D.



Guangzhou LCS Compliance Testing Laboratory Ltd.

Add: No. 44-1, Qianfeng North Road, Shiji Village, Shiji Town, Panyu District,
Guangzhou City, Guangdong, China

Tel: (86) 020-39166689 Fax: (86) 020-39166619 Internet: [Http://www.LCS-cert.com](http://www.LCS-cert.com)

Report No.: LCS180420002CR

Note:

(1) N.D. = Not detected (<MDL)

(2) ppm = mg/kg

(3) N.A. = Not Analyzed

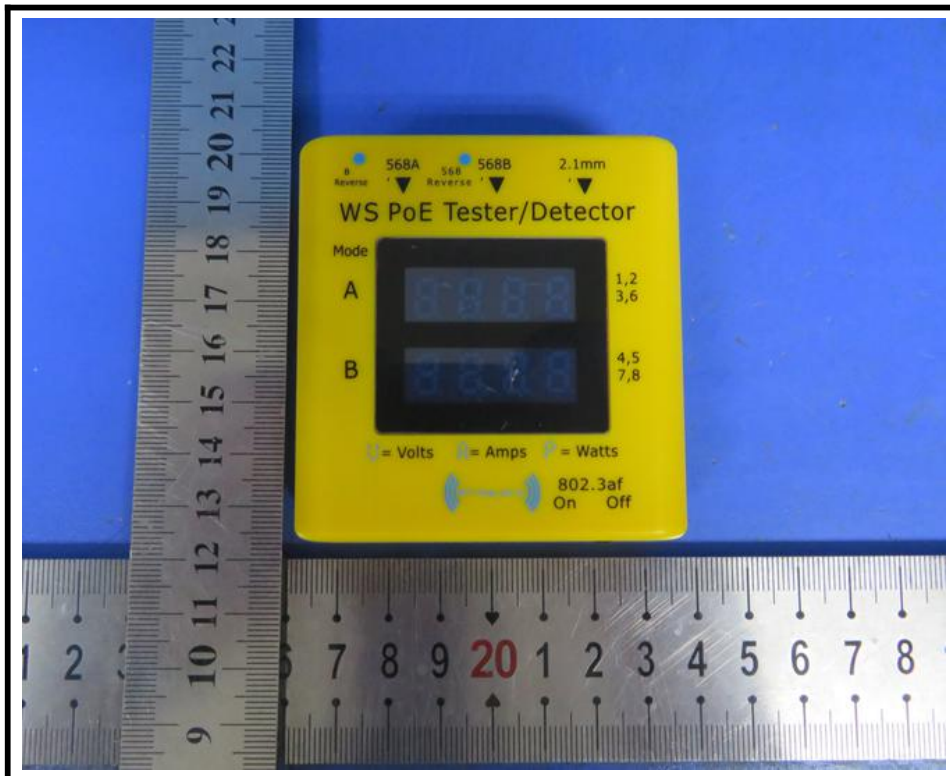
(4) Negative = the concentration of Hexavalent Chromium extracted from 50cm² sample is less than the detection limit.

Remark: Lead in electronic components, which are exempted from (RoHS) the requirements.

Disclaimer:

- The integration report is not equivalent to the test report.
- LCS does not shoulder responsibility for the authenticity of all the test data listed in integration report, which are submitted by the applicants.
- The applicants are responsible for all legal obligation caused by the inaccuracy and invalidity of the original report.
- If this disclaimer contradicts any other terms and conditions of LCS, this disclaimer will prevail.

3. PHOTOGRAPHS OF TEST SAMPLE





Guangzhou LCS Compliance Testing Laboratory Ltd.

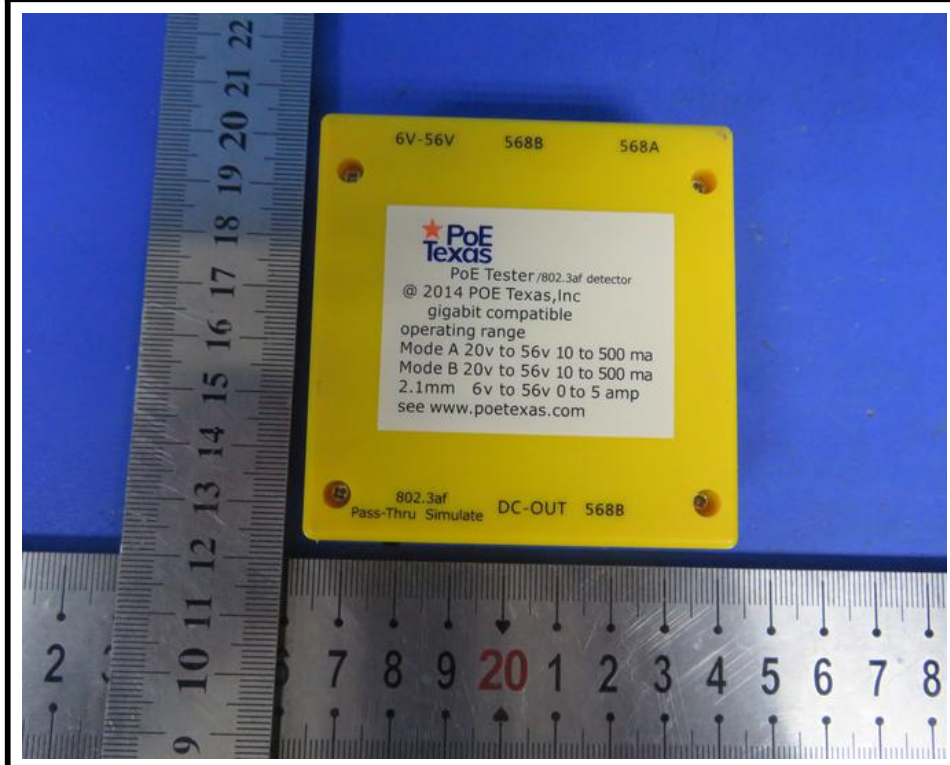
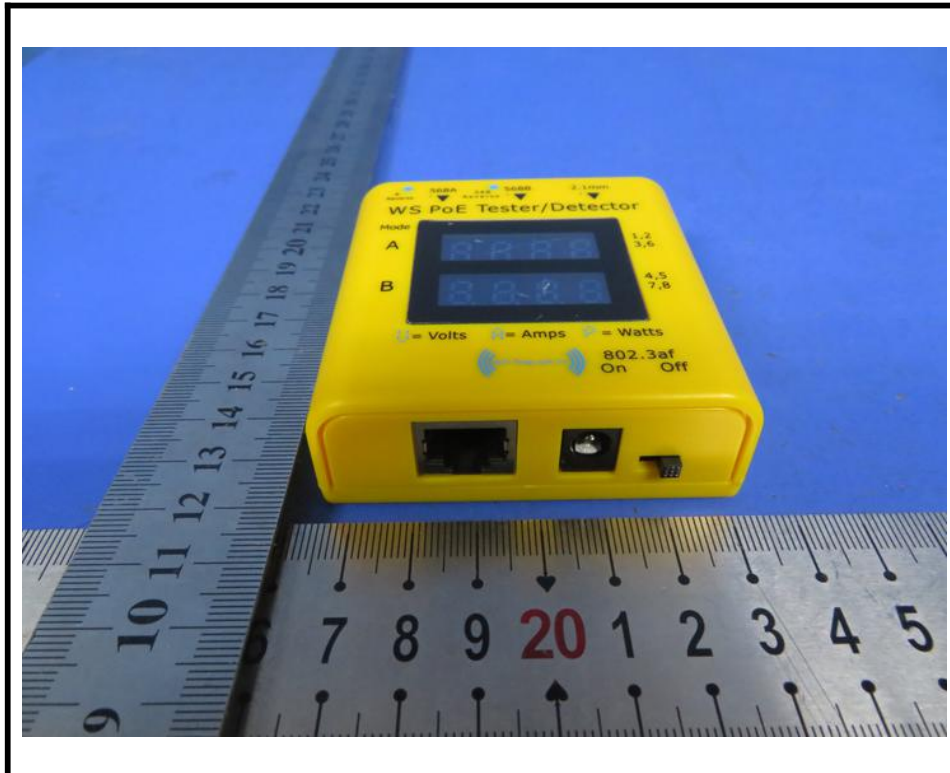
Add: No. 44-1, Qianfeng North Road, Shiji Village, Shiji Town, Panyu District,
Guangzhou City, Guangdong, China

Tel: (86) 020-39166689

Fax: (86) 020-39166619

Internet: [Http://www.LCS-cert.com](http://www.LCS-cert.com)

Report No.: LCS180420002CR



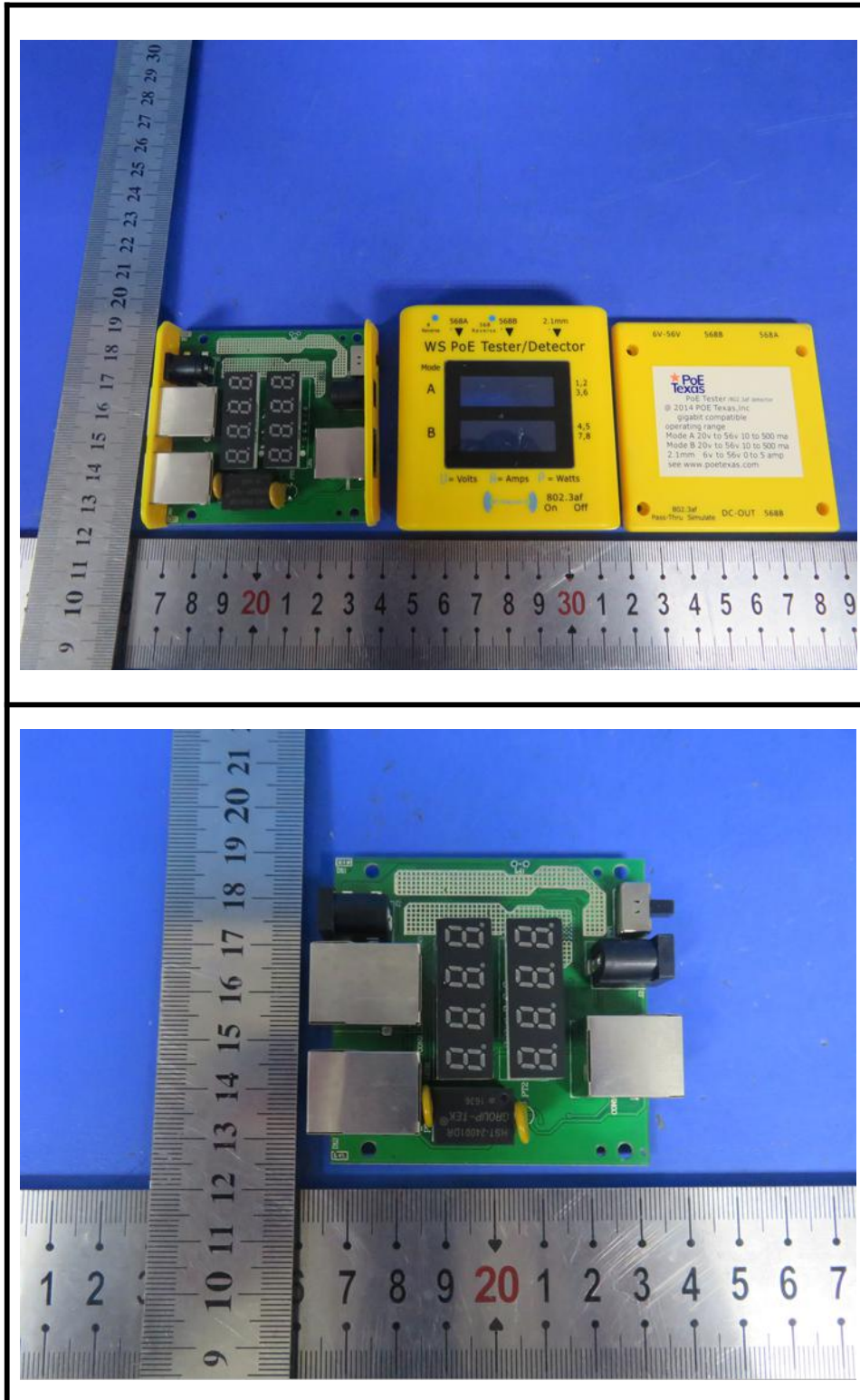


Guangzhou LCS Compliance Testing Laboratory Ltd.

Add: No. 44-1, Qianfeng North Road, Shiji Village, Shiji Town, Panyu District,
Guangzhou City, Guangdong, China

Tel: (86) 020-39166689 Fax: (86) 020-39166619 Internet: [Http://www.LCS-cert.com](http://www.LCS-cert.com)

Report No.: LCS180420002CR



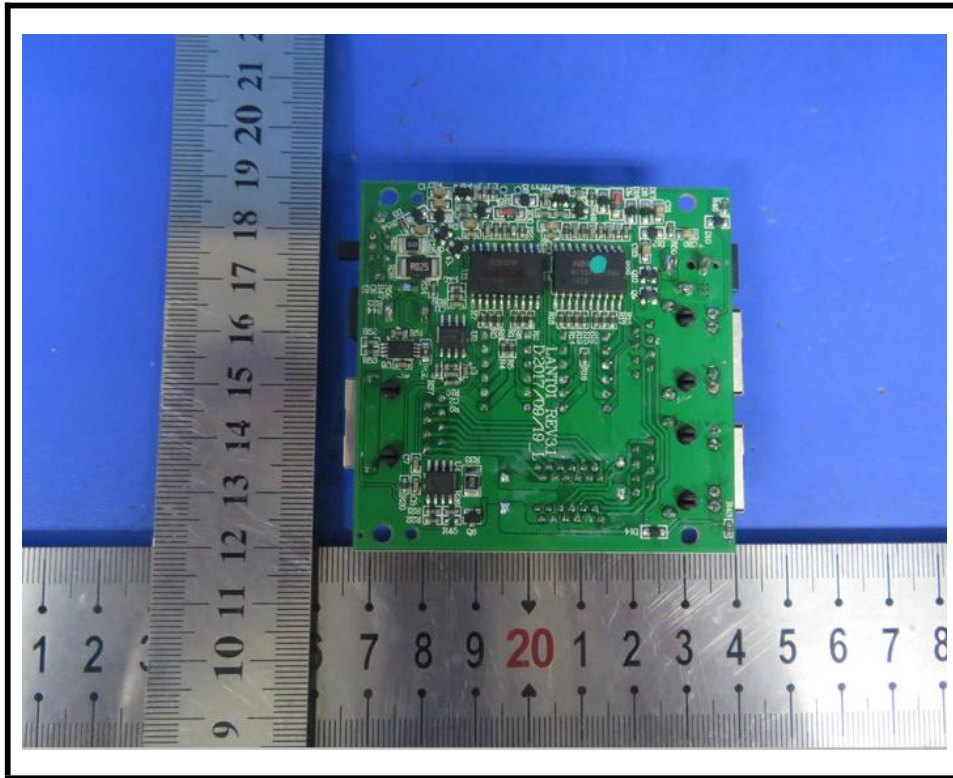


Guangzhou LCS Compliance Testing Laboratory Ltd.

Add: No. 44-1, Qianfeng North Road, Shiji Village, Shiji Town, Panyu District,
Guangzhou City, Guangdong, China

Tel: (86) 020-39166689 Fax: (86) 020-39166619 Internet: [Http://www.LCS-cert.com](http://www.LCS-cert.com)

Report No.: LCS180420002CR



LCS authenticate the photo on original report only

End of Report