



PoE World

World Class
Injectors Switches Splitters
Extenders Testers

Our Locations and Partners :

PoE-Texas Austin Texas

HQ Shenzhen China

<http://poe-world.com>

802.3AT PoE Splitter with USBC power

AT-USBC-Rev3



Product Description – GAT-USBC PoE Power Splitter

This device provides a powerful solution for delivering up to 23 watts of power to a USB-C device over 328ft of network cable. This splitter allows power to be carried on CAT-5e or CAT-6 network cables using 802.3af or 802.3at standards or 56 volt passive PoE. 802.3af switches can be used – but only 12 watts can be delivered without overload. 10/100/1000 or 10/100 switches can be used – this devices does not interact with the data..

Intended for use with any PoE switch – this active PoE solution negotiates with the switch to activate power and provide it to the client device. It is a compact and cost effective power solution. The PoE switch supplies 48, 51 or 56 volts DC at the source location. The higher DC voltage means the current is reduced by a factor of 9 compared to 5 volts, and then carried with 90% less loss over the Ethernet cable from the source, the USB-C converter at the remote end allows you to extend the charge distance for this application up to 328ft or 100 meters.

Simple usage:

- Step a) use an Ethernet cable to connect the RJ45 female of the GAT-USBC to your PoE switch or injector up to 100 meter distance.
- Step b) connect the USB-C output via a USB-C high current rated cable, to your device at short distance



Specifications

| | |
|---|---|
| Data and Power source | RJ 45 female connector |
| DC output | USB-C connector |
| Data | 10/100/1000mbit/s |
| Data+Power input Pins (802.3at mode A or mode B, Class 4) | RJ45 Ethernet adapter needed 1&2 and 3&6 – either polarity 4&5 plus and 7&8 minus |
| Input Voltage Max | Up to 57 volts |
| Input Current at 48v | 600 mA input delivers 25 watts |
| Output Voltages | Autonegotiate (see table) |
| Internal Power usage | 300 mW Keep Alive |
| Operating Temperature | 0°C ~ 50°C |
| Size | 76 x 44 x 23mm |
| Weight | 3.5 ounces |
| LED status (on RJ45 connector) | Green – Power In Active Amber – Power Out Active |
| Isolation | 3,000 volt isolation between PoE and power out |

POE+ TO USB-C UP TO 25W MAX OUTPUT

RJ45 POE IN
IEEE 802.3at



USB-C PD Output (Power)
Up to 25W



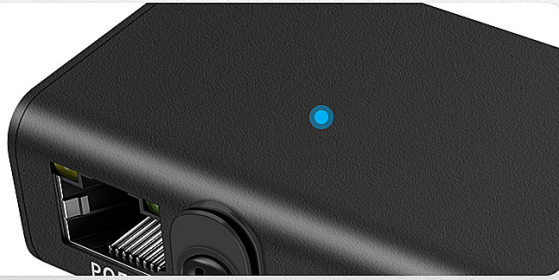
**PoE+ Optimized Power
Delivery for USB-C Devices**

SUPERIOR QUALITY

1

Aluminum Alloy Shell

Smooth and Sturdy



2

3 Installation Methods the USB-C Cable(Not Included)

- Bracket/Clamp for USB-C cable
- Screw hole for a screw-in USB-C connector
- Corner screw to add your own screw-down brackets

3

LED Indicator Informs Working Status

- PoE Input Indicator (Yellow)
- USB-C Output Indicator (Green)



Devices -----



Apple iPad Pro, Air, Mini, and 10.2in



Microsoft Surface Go



Samsung Galaxy Tab



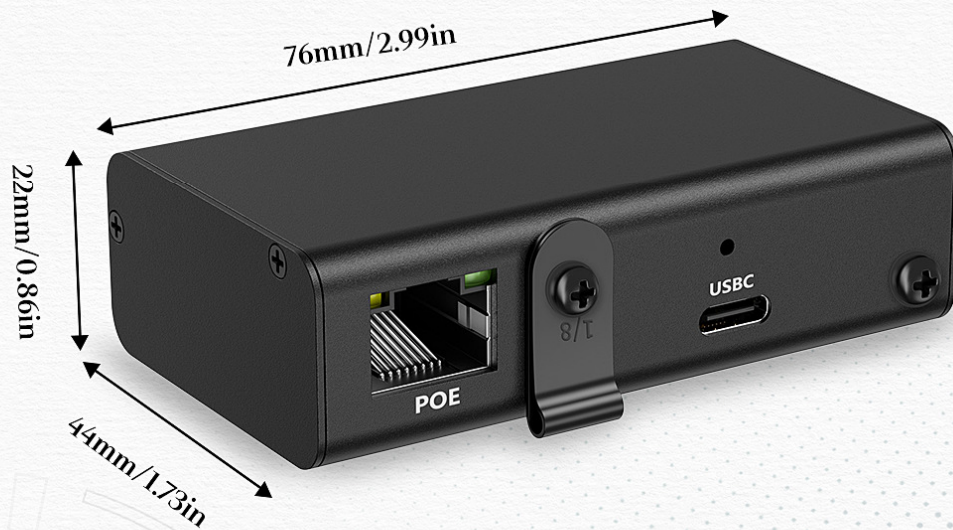
and more...

UNIVERSAL Compatibility



COMPACT DESIGN

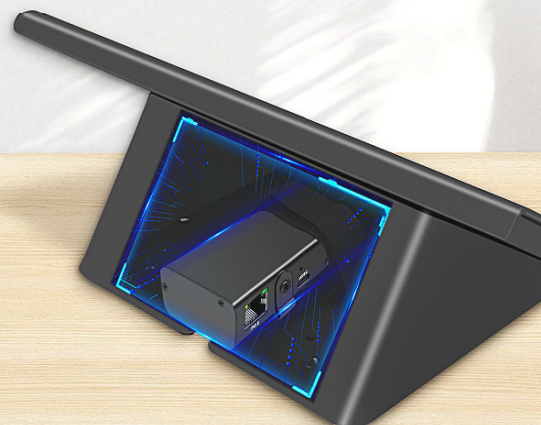
Easy to carry and convenient to use



Size:76 x 22 x 44 mm

POE+ TO USB-C POWER DELIVERY ADAPTER

*Max 25 watts output available, compatible with
tablets, computers, and phones*



INPUT:44-57V DC IEEE802.3AT
POWER OUT:USB-C (Type-C) PD3.0
5V3A,9V2A,12V1.5A
15V1.35A,20V1.25A

Right Angle, USB-C cable option,



Lightning cable option



Four Models:

| | Data | Cable | Max Power |
|--------------------|------|-----------|-----------|
| GAF-Lighting-PD-V4 | Gbit | Lightning | 10w |
| AT-USBC-Rev3 | None | USBC | 25w |
| GBT-USBC-PD | Gbit | USBC | 65w |
| GAT-USBC-PD-V4 | Gbit | USBC | 23w |

