



PoE World

World Class
Injectors Switches Splitters
Extenders Testers

Our Locations and Partners :

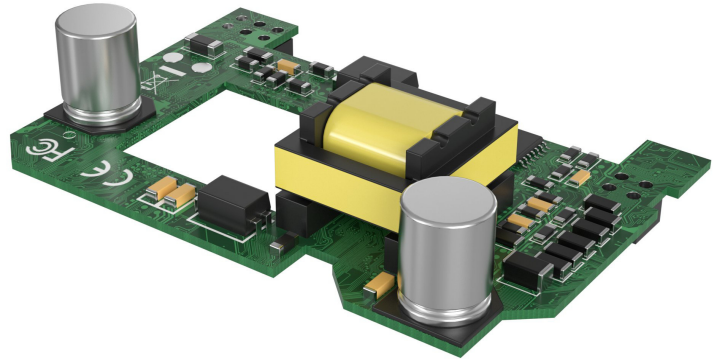
<http://poe-world.com>

PoE-Texas	Austin Texas	PoE-India	Pune India
PoE-UK	London England	PoE-World	Shenzhen China

GAF-PiHat

802.3af PoE Hat

isolated 10 watt for Raspberry Pi 3B+ or Raspberry Pi 4



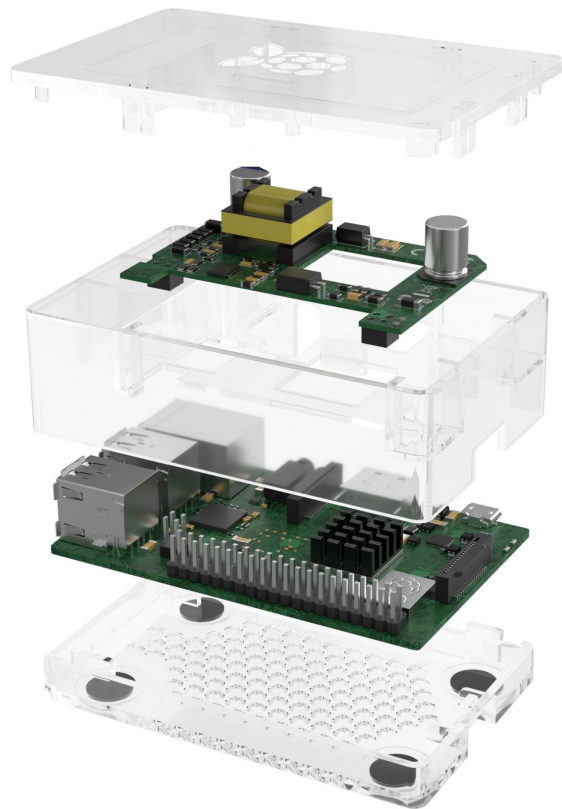
Product Description – GAF-PiHat

This PoE-World device provides an efficient solution for delivering power to a Raspberry Pi 3B+ or 4 over 328ft of network cable. This device allows power to be carried on 10/100/1000 networks with either 802.3af or passive injectors and switches with a CAT5e, CAT6 or CAT7 Ethernet network cable.

Intended for use with Cisco or similar PoE switches – this active PoE solution negotiates with the switch to activate power and provide it to the Pi. It is a compact and cost effective power solution. The PoE switch supplies 48 or 56 volts DC at the source location. The higher DC voltage means the current is reduced by a factor of 9, and then carried with less loss over the cable. This PoE to 5 volt converter allows you to operate the Pi up to 328ft or 100 meters from a power source.

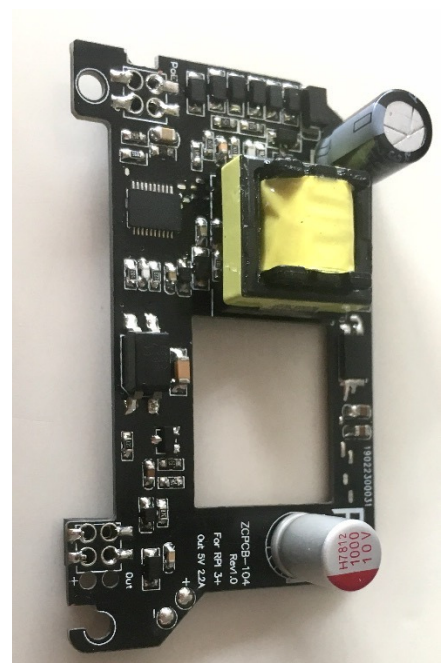
The form factor is ideal for a Pi case – especially the CanaKit Premium case. The connector pins are available for GPIO and serial use. There is room for a large heat sink, and the output power is completely regulated and stable, with much less noise than the Raspberry Pi hat.

The 10 watts is plenty of power for your applications.



Specifications

Power and data source input	RJ 45 female connector on Pi 3 B+ or Pi 4
Isolated Data to powered device	All 4 pairs are active for data
Power input Pins	1&2 and 3&6 – either polarity
802.3af (mode A or mode B)	4&5 + plus, 7&8 - minus
802.3af class	Class 3 - 12.95 watts max
Input Voltage Range	From 44 to 57 volts
Input Current at 48v	265 ma input delivers 2 amps out
Output Voltage Max load (5v10w)	5v +- 2% at 2 amps 10 watts
Operating Temperature	0°C ~ 50°C
Size	65 x 39 x 11 mm (height from top of Pi pins)
Isolation	3000 volts isolation from PoE side to DC output



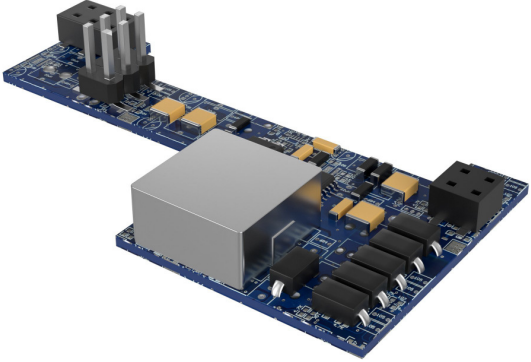
Other PoE-World products



PoE Tester

- PoE Injectors
- 4 port
- 6 port
- 8 port
- 1U 12 port
- 1U 16 port
- 1U 24 port

PoE injectors



Gigabit PoE splitters for DC, USB and USB-C