

PoE World

World Class
Injectors Switches Splitters
Extenders Testers

Our Locations and Partners :

<http://poe-world.com>

PoE-Texas

Austin Texas

HQ Shenzhen China

GAT-PiHat 802.3at PoE Hat isolated 20 watts for Raspberry Pi v5



Product Description – GAT-PiHat

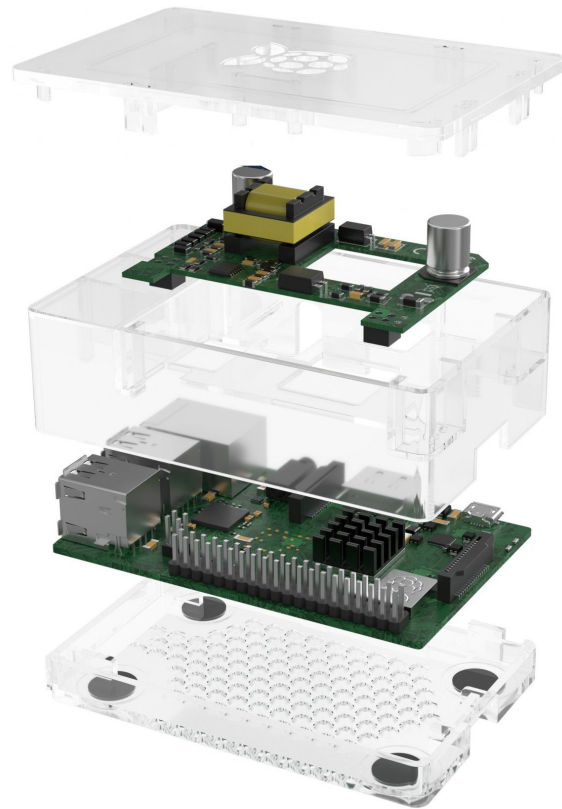
This PoE-World device provides an efficient solution for delivering power to a Raspberry Pi 5 over 328ft of network cable. This device allows power to be carried on 10/100/1000 networks with either 802.3af or passive injectors and switches with a CAT5e, CAT6 or CAT7 Ethernet network cable.

Intended for use with Cisco or similar PoE switches – this active PoE solution negotiates with the switch to activate power and provide it to the Pi. It is a compact and cost effective power solution. The PoE switch supplies 48 or 56 volts DC at the source location. The higher DC voltage means the current is reduced by a factor of 9, and then carried with less loss over the cable. This PoE to 5 volt converter allows you to operate the Pi up to 328ft or 100 meters from a power source.

The form factor is ideal for a Pi case. The connector pins are available for GPIO and serial use. The Fan is installed

The 20 watts is plenty of power for your applications.

See also versions for version 3, 3A and 4



Specifications

Power and data source input
Isolated Data to powered device

Power input Pins
802.3af (mode A or mode B)

802.3af class
Input Voltage Range
Input Current at 48v
Output Voltage Max load (5v10w)
Operating Temperature

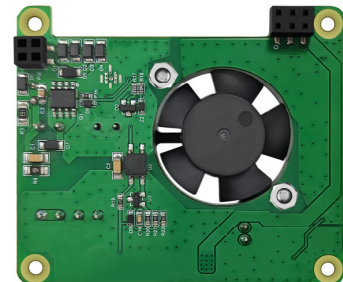
Size
Isolation

RJ 45 female connector on the Pi
All 4 pairs are active for data
1&2 and 3&6 – either polarity

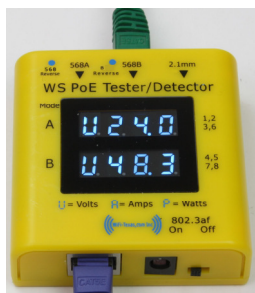
4&5 + plus, 7&8 - minus

Class 5 – 20 watts max
From 44 to 57 volts
265 ma input delivers 2 amps out
5v +- 2% at 4 amps 20 watts
0°C ~ 50°C

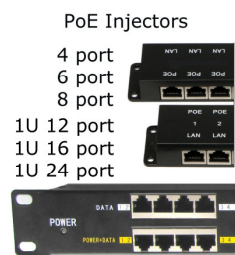
65 x 39 x 11 mm (height from top of Pi pins)
3000 volts isolation from PoE side to DC output



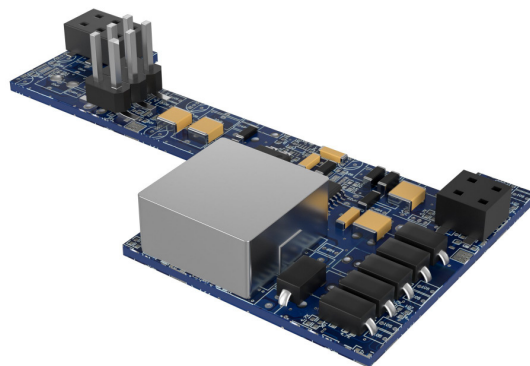
Other PoE-World products



PoE Tester



PoE injectors



Gigabit PoE splitters for DC, USB and USB-C



PoE Switch
10/100/1000



PoE to USBc converters