



PoE World

World Class
Injectors Switches Splitters
Extenders Testers

Our Locations and Partners :

PoE-Texas Austin Texas HQ Shenzhen China

<http://poe-world.com>

65 Watt PoE Splitter

GBT-USBC-PD

Power and Data
10/100/1000 mb/s



Product Description – GAT-USBC PoE Power Splitter

This device provides a powerful solution for delivering up to 65 watts of power to a USB-C device over 328ft of network cable. This splitter allows power to be carried on CAT-5e or CAT-6 network cables using 802.3af, 802.3at, or 802.3bt standards or 56 volt passive PoE. 802.3af switches can be used – but only 12 watts can be delivered without overload. 10/100/1000 or 10/100 switches can be used – the device allows 10/100/1000 at full duplex rates to the remote device.

Intended for use with any PoE switch – our active PoE solutions negotiate with the switch to activate power and provide it to the client device. It is a compact and cost effective power solution. The PoE switch supplies 48, 51 or 56 volts DC at the source location. The higher DC voltage means the current is reduced by a factor of 9 compared to 5 volts, and then carried with 90% less loss over the Ethernet cable from the source, the USB-C converter at the remote end allows you to extend the charge distance for this application up to 328ft or 100 meters.

Simple usage:

Step a) use an Ethernet cable to connect the RJ45 female of the GAT-USBC to your PoE switch or injector up to 100 meter distance.
Step b) connect the USB-C output via a USB-C high current rated cable, to your device at short distance

BT3 / Auto switch:

if the PSE source does not recognize the 802.3BT built into this device, or you want to use a Passive PoE injector, please move the switch from “Auto” to BT3. This will enable full power operation.

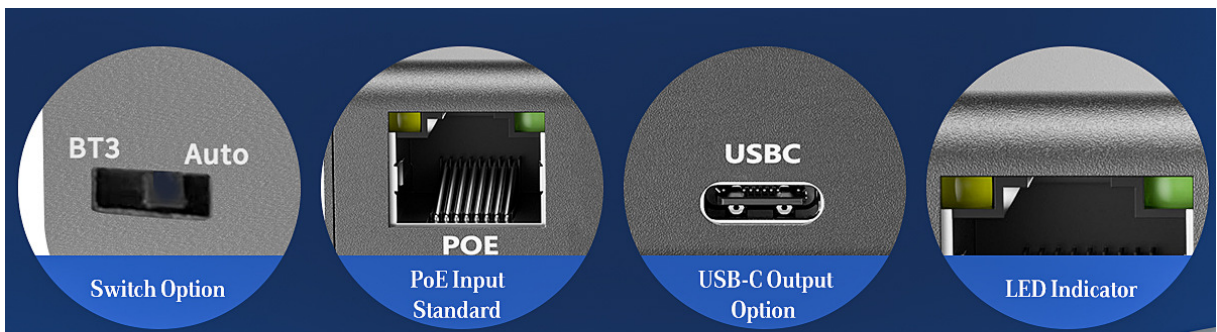


PSE	Left LED(POE)	Right LED(DATA)	PDO
IEEE802.3AF/PASSIVE	RED	10/100M GREEN 1000M YELLOW	5V2A (10W)
IEEE802.3AT	RED	10/100M GREEN 1000M YELLOW	5V2A,9V2.63A,12V1.99A,15V1.57A,20V1.2A (24W MAX)
IEEE802.3BT TYPE3	GREEN	10/100M GREEN 1000M YELLOW	5V2A,9V2.78A,12V2.84A,15V2.6A,20V2.1A (42W MAX)
IEEE802.3BT TYPE4	GREEN	10/100M GREEN 1000M YELLOW	5V2A,9V2.78A,12V2.84A,15V2.6A,20V3.25A(65W MAX)
BT3			
PASSIVE/AF/AT	RED	10/100M GREEN 1000M YELLOW	5V2A,9V2.78A,12V2.84A,15V2.6A,20V2.1A (42W MAX)
MCU BT3/BT4	GREEN/RED	10/100M GREEN 1001M YELLOW	5V2A,9V2.78A,12V2.84A,15V2.6A,20V2.1A (42W MAX)

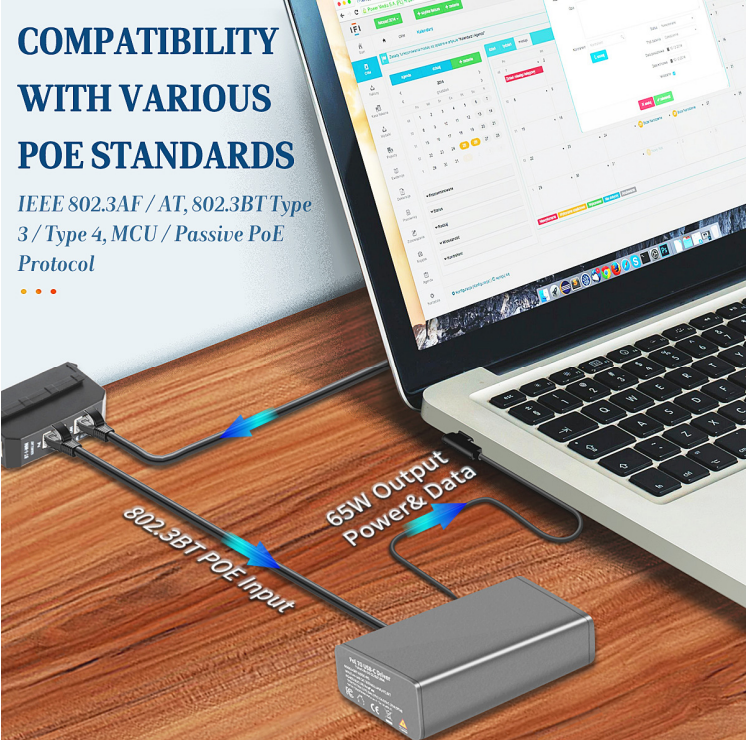
Specifications

Data and Power source	RJ 45 female connector
DC output	USB-C connector
Data	10/100/1000mbit/s RJ45 Ethernet adapter needed
Data+Power input Pins (802.3at mode A or mode B, Class 4)	1&2 and 3&6 – either polarity 4&5 plus and 7&8 minus
Input Voltage	44-56 volts
Input Current at 48v	600 mA input delivers 25 watts
Output Voltages	Autonegotiate (see table)
Internal Power usage	300 mW Keep Alive
Operating Temperature	0°C ~ 50°C
Size	76 x 44 x 23mm
Weight	3.5 ounces
LED status (on RJ45 connector)	Green – Power In Active Amber – Power Out Active
Isolation	3,000 volt isolation between PoE and power out





SWITCH OPTION	POE INPUT STANDARD	USB-C OUTPUT OPTION	LED INDICATOR	
			Left LED (POE)	Right LED (DATA)
Auto	IEEE802.3 AF/Passive	5V2A (10W Max)	Red	10/100 Mbps Green
	IEEE802.3 AT	5V2A, 9V2.63A, 12V1.99A, 15V1.57A, 20V1.2A (24W Max)	Red	
	IEEE802.3BT Type 3	5V2A, 9V2.78A, 12V2.84A, 15V2.6A, 20V2.1A (42W Max)	Green	
	IEEE802.3BT Type 4	5V2A, 9V2.78A, 12V2.84A, 15V2.6A, 20V3.25A (65W Max)	Green	1000 Mbps Yellow
BT3	IEEE802.3 AF/ AT Passive	5V2A, 9V2.78A, 12V2.84A, 15V2.6A, 20V2.1A (42W Max)	Red	1000 Mbps Yellow
	MCU BT3/BT4		Green/Red	

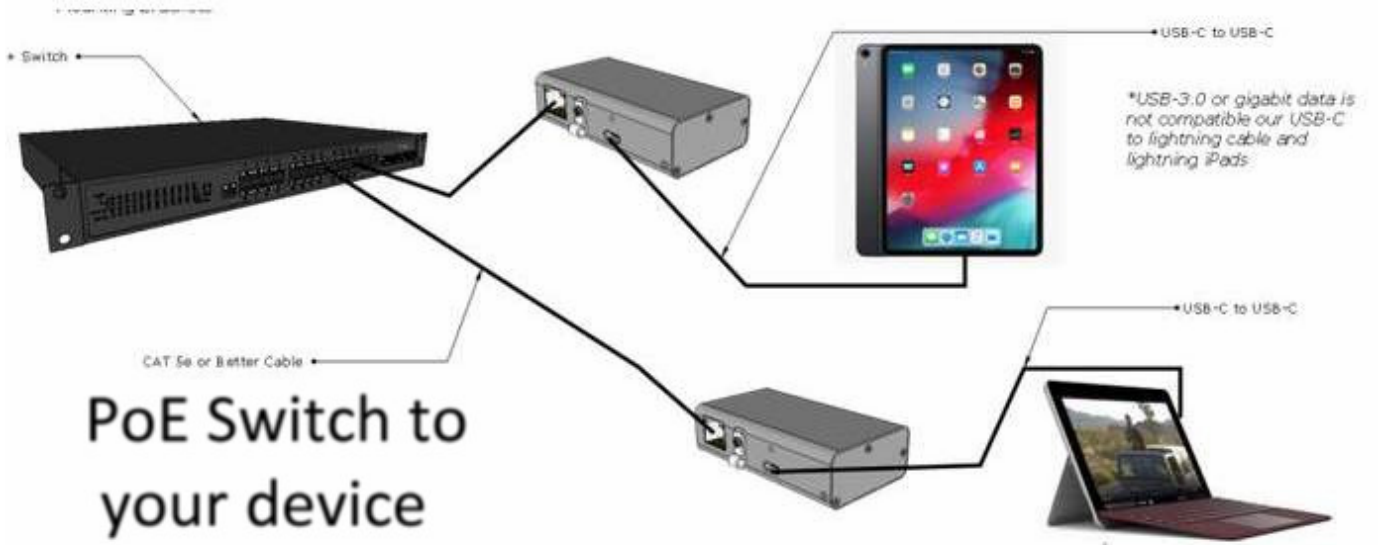


COMPATIBILITY WITH VARIOUS POE STANDARDS

IEEE 802.3AF / AT, 802.3BT Type 3 / Type 4, MCU / Passive PoE Protocol









PoE To USB-C Driver

Patent No.: US 11,627,004



Warm Surface In Operation


Bt3 Auto



PoE Led Indicator:

- Red: IEEE802.3af/at/Passive AF/Passive ---USBC OUT: 5V2A
AT ---USBC OUT: 5V2A,9V2.63A
12V1.99A,15V1.57A,20V1.2A
- Green: IEEE802.3BT3/BT3
Bt3 ---USBC OUT: 5V2A,9V2.78A
12V2.84A,15V2.6A,20V2.1A
- Bt4 ---USBC OUT: 5V2A,9V2.78A
12V2.84A,15V2.6A,20V3.25A

PoE Link



Link Led Indicator:

- Green:10/100M
- Amber:1000M

Four Models:

	Data	Cable	Max Power
GAF-Lighting-PD-V4	Gbit	Lightning	10w
AT-USBC-Rev3	None	USBC	25w
GBT-USBC-PD	Gbit	USBC	65w
GAT-USBC-PD-V4	Gbit	USBC	23w

